



863

**PRINCESS ST
SUITE 304 KINGSTON, ON**

FOR LEASE / OFFICE SPACE

CONTACT INFORMATION **SCOTT BOTTING, B.COMM**
Broker
613 542 2724 x 33
scott.botting@cwkingston.com



PROPERTY DETAILS

AVAILABLE SPACE +/- 1,342 sf

RENTAL RATE \$14.00 psf

ADDITIONAL RENT \$12.75 psf (2023 est.). Utilities included.

PARKING Dedicated spaces available on site, plus common visitor parking

ZONING WM1
under By-Law Number 2022-62

AVAILABILITY Immediate

- EXISTING TENANTS**
- KPMG
 - Scotia Bank
 - Public Service Alliance of Canada
 - Rogers
 - J.L. Richards & Associated Limited
 - Nelson Kotze LLP

- EXISTING IMPROVMENTS**
- Four private offices
 - In-suite washroom
 - Waiting and reception area
 - Storage/IT room and closet

HIGHLIGHTS

- Central location within close proximity to Kingston Centre and many amenities
- Elevator serviced
- On public transit route
- Signage - Pylon + directory board space available

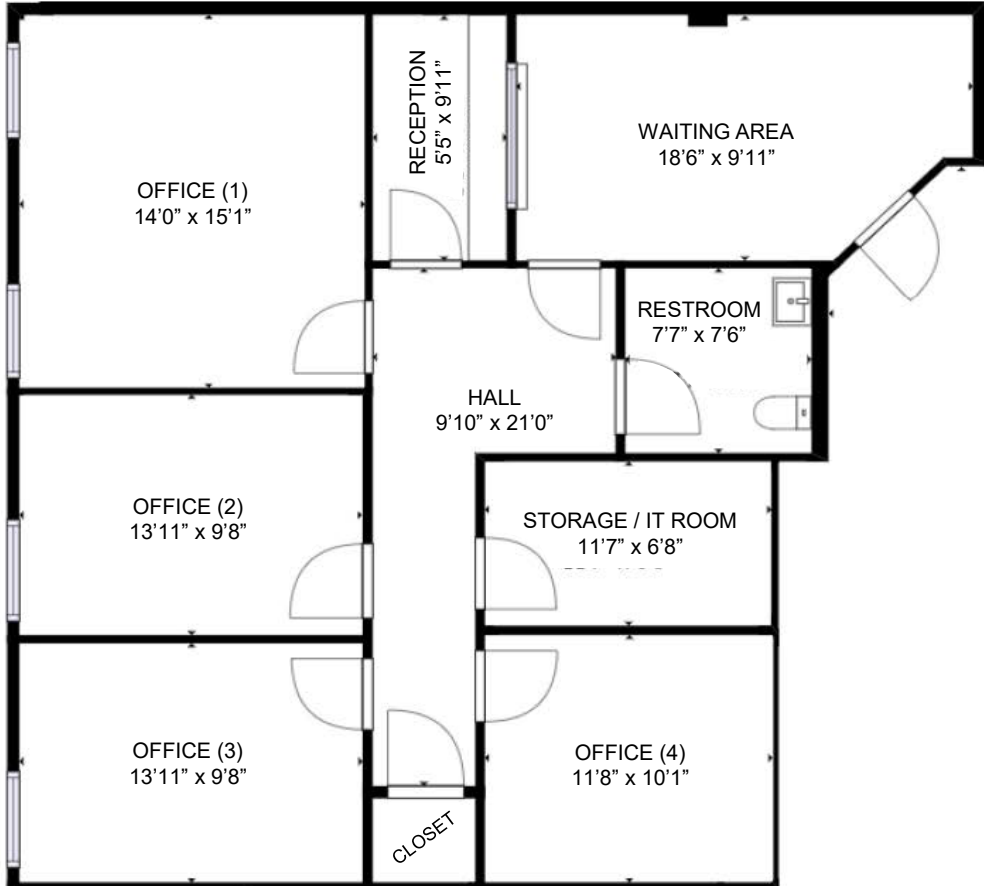
LOCATION

Situated on the north side of Princess Street, just east of Sir John A. MacDonald Boulevard and Bath Road. The property can also be accessed from Concession Street

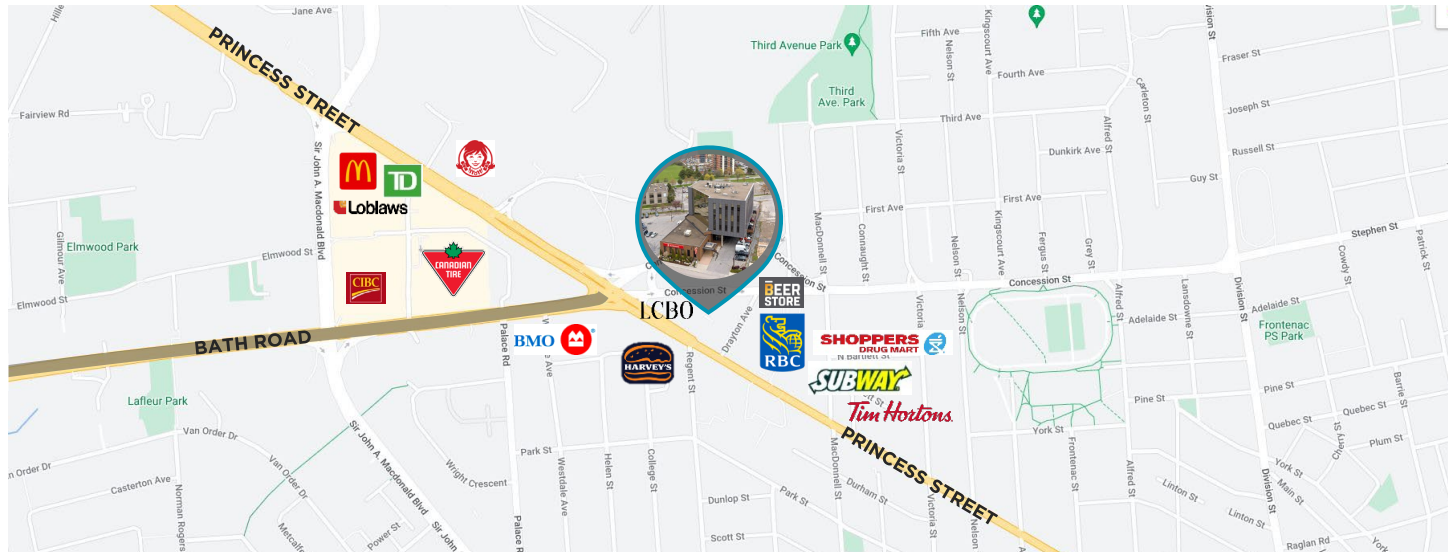


FLOOR PLAN

+/- 1,342 RENTABLE SF



LOCATION



CONTACT INFORMATION

SCOTT BOTTING, B.COMM
Broker
613 542 2724 x 33
scott.botting@cwkingston.com

CUSHMAN & WAKEFIELD KINGSTON
78 Brock St
Kingston, ON K7L 1R9
cushmanwakefieldkingston.com

863

PRINCESS ST SUITE 304 KINGSTON, ON

FOR LEASE / OFFICE SPACE



Cushman & Wakefield Kingston, Brokerage / Independently Owned and Operated / All rights reserved. A Member of the Cushman & Wakefield Alliance Cushman & Wakefield Copyright 2022. All rights reserved. No warranty or representation, express or implied, is made to the accuracy or completeness of the information contained herein, and same is submitted subject to errors, omissions, change of price, rental or other conditions, withdrawal without notice, and to any special listing conditions imposed by the property owner(s). As applicable, we make no representation as to the condition of the property (or properties) in question. CW1 V1101